

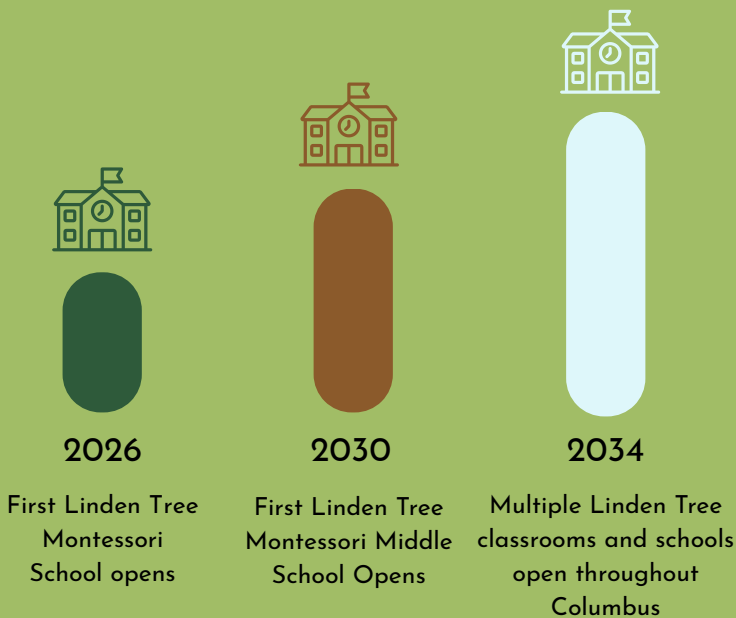


## Grow with us!

Linden Tree Montessori School is a tuition-free public charter school in the Linden area of Columbus, Ohio. We serve preschool through 2<sup>nd</sup> grade and adding a grade every year up to 8<sup>th</sup>. Led by teachers who design and manage learning environments, Linden Tree maintains a close connection to students and families, fostering a sense of belonging and supporting lifelong learning through the Montessori method. At full capacity, we will house up to 96 students per school with a goal of more than one school across Columbus and Ohio.

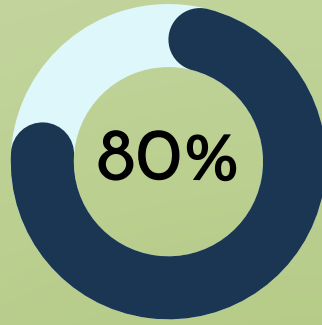
## Measuring Success

In Columbus, early childhood outcomes reflect significant gaps, with only 36.5% of children kindergarten-ready and Columbus City Schools reporting 31% reading and 21% math proficiency, well below state averages. The district's 78% graduation rate and 2-star rating, including 1-star marks in early literacy, highlight persistent inequities that begin early. Families face limited access to affordable, high-quality early learning, particularly for children with special needs and neurodiversity. Combined with the impacts of poverty and rising social-emotional needs, these challenges underscore the urgent need for inclusive, whole-child education models that integrate strong academics, SEL, and individualized support to improve outcomes and reduce disparities.



Proficiency	Linden Tree goal by 2028
Math Growth	80%
Language Growth	80%
Kindergarten Readiness	80%
Improved SEL	90%
Student retention	95%
Attendance	85%

We've raised  
**\$400K**  
of our  
**\$500K goal!**



Your support will help bring this vision to life by funding critical startup costs not covered by public programs, including facility preparation, licensure, classroom setup, and Montessori materials. These one-time investments—such as capital improvements, technology, supplies, and outdoor learning resources—are essential to opening a safe, fully equipped learning environment. With a goal of \$100,000 for launch only, this funding will ensure Linden Tree Montessori can open strong and sustainably, expanding access to high-quality, tuition-free education for Columbus families.

## Start-up costs

**\$25,000** - Facility startup (rent, deposit, fees)

**\$50,000** - Classroom materials & furnishings

**\$10,000** - Facility upgrades (child-centered improvements)

**\$15,000** - Licensing, safety and opening costs

## Our momentum

- Secured a permanent facility on Genessee Ave.
- Strong early enrollment interest from local families
- Backed by partnerships with national and local Montessori networks
- Sustainable long-term funding model through public charter + childcare funding

## Why Montessori?



Research shows Montessori students demonstrate stronger academic outcomes, executive functioning, and social-emotional development—benefits that last into adulthood. Our school nurtures creativity, independence, and critical thinking. We emphasize nature-based learning, cultural appreciation, restorative justice, and family empowerment through school choice.

*Your support helps build a school where every child—regardless of background—can thrive. Together, we can open doors for the next generation of learners.*

## Ways to give

We offer multiple sponsorship tiers from **Seed (\$1,000 and below)** to **Legacy (\$50,000+)**, with recognition, event invitations, and community engagement opportunities. Give through [givebutter.com/thelindentreeschool](https://givebutter.com/thelindentreeschool)



[www.lindentreeschool.org](https://www.lindentreeschool.org)

[info@lindentreeschool.org](mailto:info@lindentreeschool.org)

(614) 428-0048